

LedSet(KD Serial)

Software Operation Manual

Version: Ver.1.0

Statement

Dear user friend , thanks for choosing SHENZHEN SYSOLUTION TECHNOLOGY CO.,LTD (hereinafter referred to as Xixun Technology) as your LED advertising equipment control system. The main purpose of this document is to help you quickly understand and use the product. We strive to be precise and reliable when writing the document, and the content may be modified or changed at any time without notice.

Copyright

The copyright of this document belongs to Xixun Technology. Without the written permission of our company, no unit or individual may copy or extract the content of this article in any form.

Trademark



is a registered trademark of Xixun Technology.

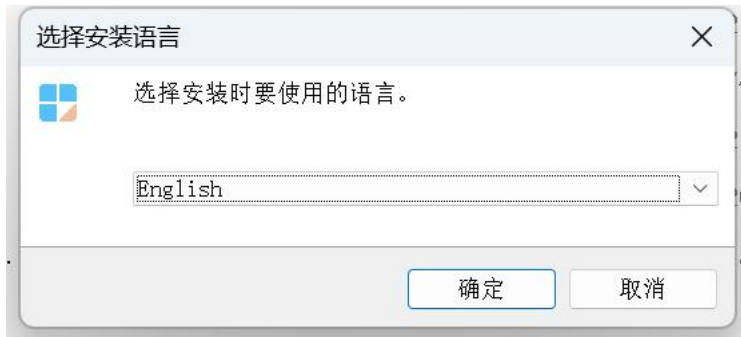
Update Record

No.	Version	Updates	Revision Date
1	Ver.1.0	Initial Release	2024.07.08

Note: The document is subject to change without prior notice.

SHENZHEN SYSOLUTION TECHNOLOGY CO., LTD

1. Download and install LedSet

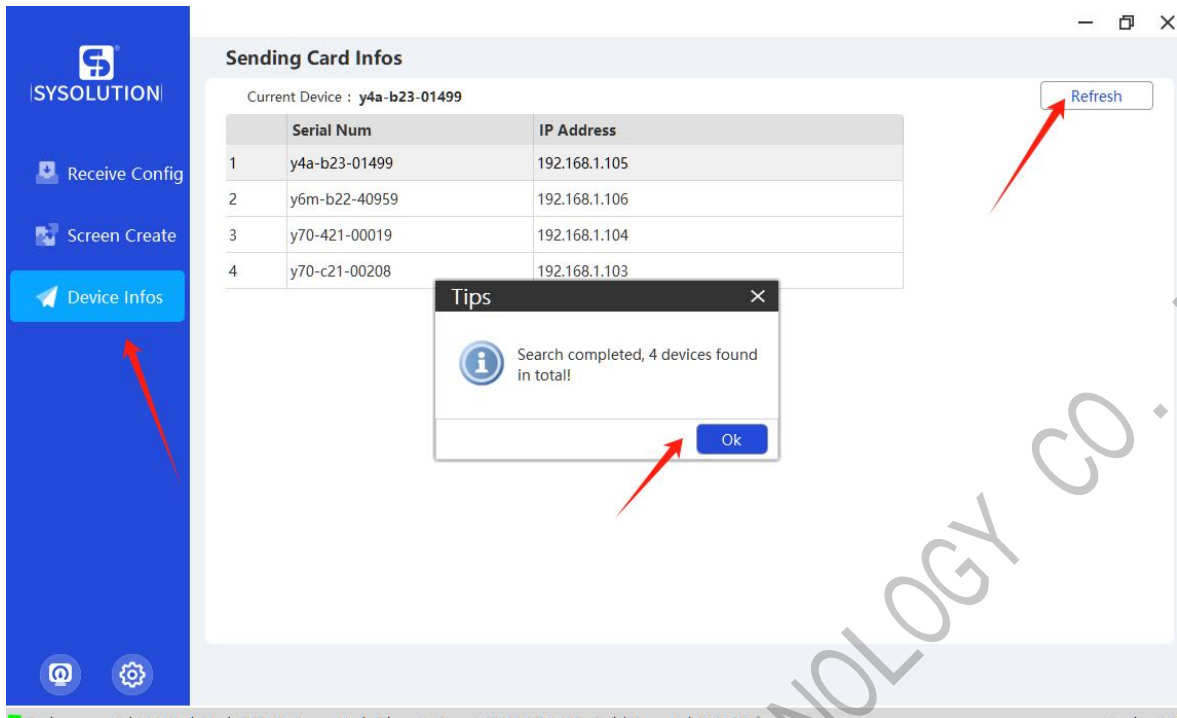


2. Use WiFi to connect (password: 12345678)



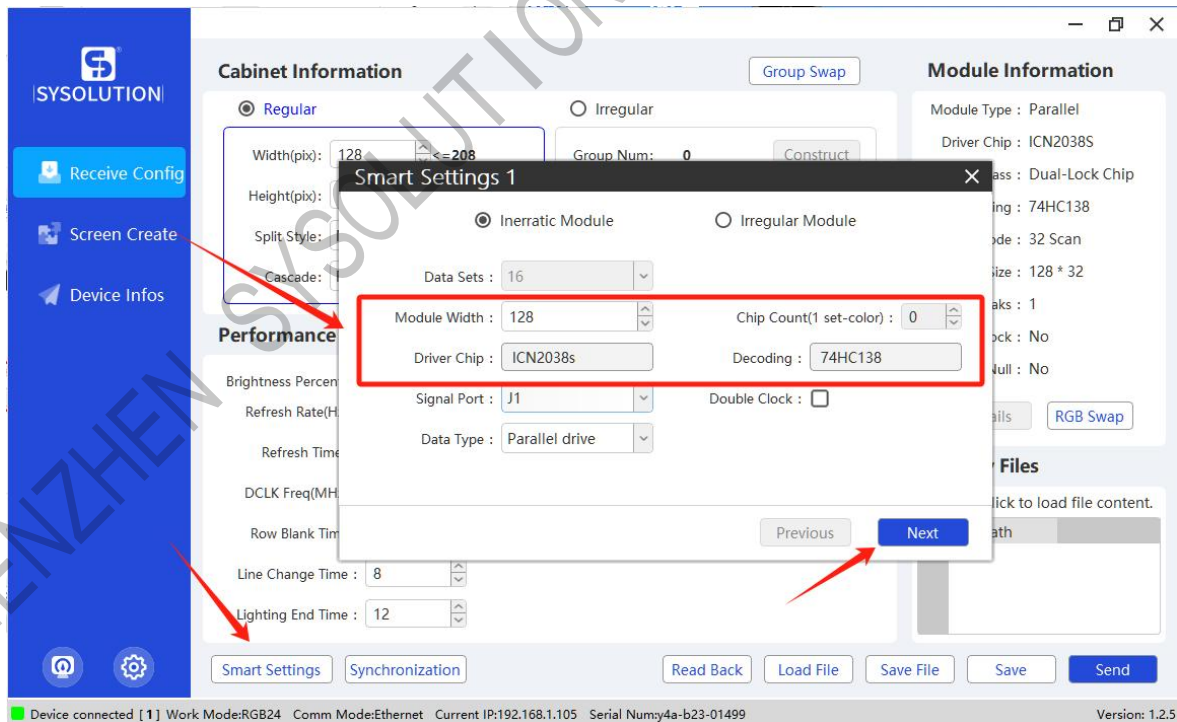
3. Open the software

Click Device Infos - Refresh Info to view the card information.

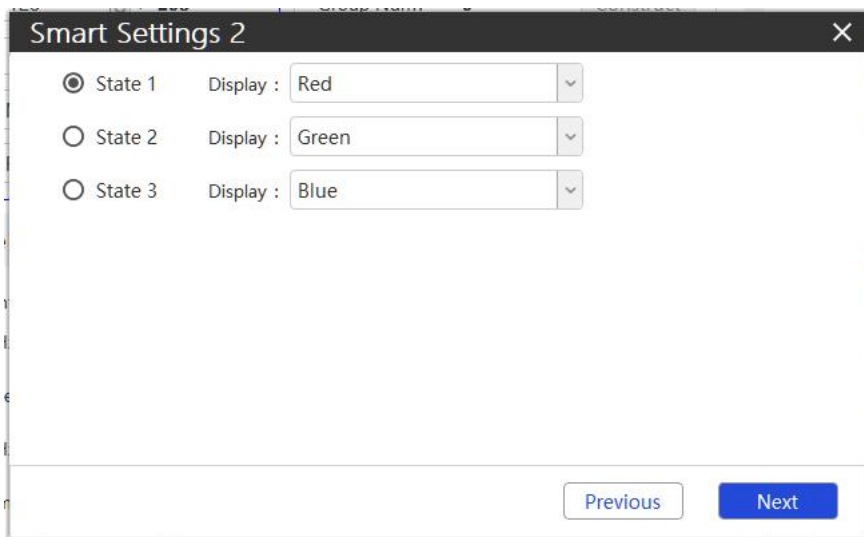


4. Smart Settings

Module width, chip and decode settings.



5. Observe the display of screen state



Smart Settings 2

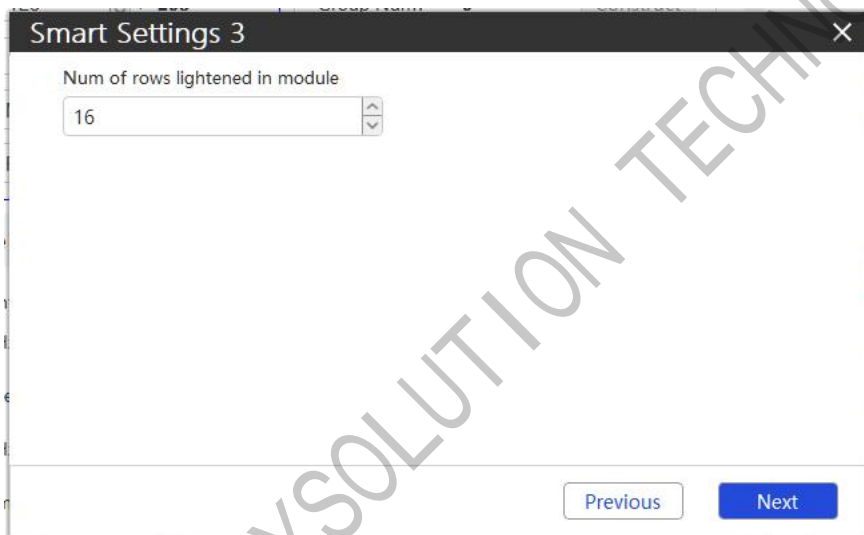
State 1 Display : Red

State 2 Display : Green

State 3 Display : Blue

Previous Next

6. Observe the number of lines in which the module is lighted



Smart Settings 3

Num of rows lightened in module

16

Previous Next



Smart Settings 4

Num of rows lightened in module

1

Previous Next

7. According to the screen flash point to go point

Smart Settings 5																																									
Number of null points: 0																																									
Null Point Undo Reset																																									
1	88	89	90	91	92	93	94	95	96	97	98	99	100	101	102	103	104	105	106	107	108	109	110	111	112	113	114	115	116	117	118	119	120	121	122	123	124	125	126	127	128
2	129	129	129	129	129	129	129	129	129	129	129	129	129	129	129	129	129	129	129	129	129	129	129	129	129	129	129	129	129	129	129	129	129	129	129	129	129	129	129	129	
3	130	130	130	130	130	130	130	130	130	130	130	130	130	130	130	130	130	130	130	130	130	130	130	130	130	130	130	130	130	130	130	130	130	130	130	130	130	130	130		
4	131	131	131	131	131	131	131	131	131	131	131	131	131	131	131	131	131	131	131	131	131	131	131	131	131	131	131	131	131	131	131	131	131	131	131	131	131	131	131		
5	132	132	132	132	132	132	132	132	132	132	132	132	132	132	132	132	132	132	132	132	132	132	132	132	132	132	132	132	132	132	132	132	132	132	132	132	132	132	132		
6	133	133	133	133	133	133	133	133	133	133	133	133	133	133	133	133	133	133	133	133	133	133	133	133	133	133	133	133	133	133	133	133	133	133	133	133	133	133	133		
7	134	134	134	134	134	134	134	134	134	134	134	134	134	134	134	134	134	134	134	134	134	134	134	134	134	134	134	134	134	134	134	134	134	134	134	134	134	134	134		
8	135	135	135	135	135	135	135	135	135	135	135	135	135	135	135	135	135	135	135	135	135	135	135	135	135	135	135	135	135	135	135	135	135	135	135	135	135	135	135		
9	137	137	137	137	137	137	137	137	137	137	137	137	137	137	137	137	137	137	137	137	137	137	137	137	137	137	137	137	137	137	137	137	137	137	137	137	137	137	137		
10	136	136	136	136	136	136	136	136	136	136	136	136	136	136	136	136	136	136	136	136	136	136	136	136	136	136	136	136	136	136	136	136	136	136	136	136	136	136	136		
11	138	138	138	138	138	138	138	138	138	138	138	138	138	138	138	138	138	138	138	138	138	138	138	138	138	138	138	138	138	138	138	138	138	138	138	138	138	138	138		
12	139	139	139	139	139	139	139	139	139	139	139	139	139	139	139	139	139	139	139	139	139	139	139	139	139	139	139	139	139	139	139	139	139	139	139	139	139	139	139		
13	140	140	140	140	140	140	140	140	140	140	140	140	140	140	140	140	140	140	140	140	140	140	140	140	140	140	140	140	140	140	140	140	140	140	140	140	140	140	140		
14	141	141	141	141	141	141	141	141	141	141	141	141	141	141	141	141	141	141	141	141	141	141	141	141	141	141	141	141	141	141	141	141	141	141	141	141	141	141	141	141	
15	142	142	142	142	142	142	142	142	142	142	142	142	142	142	142	142	142	142	142	142	142	142	142	142	142	142	142	142	142	142	142	142	142	142	142	142	142	142	142		
16	143	143	143	143	143	143	143	143	143	143	143	143	143	143	143	143	143	143	143	143	143	143	143	143	143	143	143	143	143	143	143	143	143	143	143	143	143	143	143		

8. Set the whole screen width and height, send to see whether the normal display and then save the data.

The screenshot shows the SYSOLUTION software interface. On the left is a blue sidebar with navigation options: 'Receive Config', 'Screen Create', and 'Device Infos'. The main area is divided into three panels: 'Cabinet Information', 'Performance Settings', and 'Module Information'. In the 'Cabinet Information' panel, the 'Regular' radio button is selected, and the text 'Full screen size' is written in red. The 'Width(pixel)' and 'Height(pixel)' input fields are highlighted with a red box and contain the value '128'. To the right of these fields, the maximum allowed values are shown as '<=208' and '<=1024'. Below this, 'Split Style' is set to 'No Split' and 'Cascade' is set to 'Right To Left'. The 'Performance Settings' panel shows various parameters like 'Brightness Percent: 87.8%', 'Refresh Rate(Hz): 960', and 'DCLK Freq(MHz): 13.2'. The 'Module Information' panel on the right lists hardware details like 'Module Type: Parallel' and 'Driver Chip: ICN2038S'. At the bottom of the interface, there are several buttons: 'Smart Settings', 'Synchronization', 'Read Back', 'Load File', 'Save File', 'Save', and 'Send'. The 'Send' button is highlighted with a red arrow and the number '1', and the 'Save' button is highlighted with a red arrow and the number '2'. A status bar at the very bottom displays connection information and the version number '1.2.5'.